

6042

TELEHANDLER

SKYTRAK

Performance

Rated Capacity	6,000 lb	2,722 kg
Maximum Lift Height	41 ft 11 in.	12.7 m
Load at Max Height	6,000 lb	2,722 kg
Maximum Forward Reach	27 ft 11 in.	8.51 m
Load at Max Reach	1,400 lb	635 kg
Frame Leveling	10°	
Lift Speed (boom retracted)		
Up	17 sec	
Down	13 sec	
Boom Speed		
Extended	19 sec	
Retracted	19 sec	
Top Travel Speed (4-Speed)	19 mph	31 kph
Drawbar Pull (loaded)	22,000 lb	9,979 kg
Outside Turning Radius	14 ft	4.26 m
Operating Weight	23,740 lb	10,768 kg

Standard Specifications

Engine

Make and Model	Cummins QSB3.3L	
No. of Cylinders	4	
Displacement	202 cu in.	3.3 L
Gross Power Basic	85 hp	63 kW
Maximum Torque @ 1600 rpm	277 lb-ft	376 Nm
Fuel Tank Capacity	35 gal	132 L

Transmission

Modulated powershift.
4-speed forward and 3-speed reverse.

Axles

Full-time planetary 4-wheel drive.
Oscillating rear axle with Stabil-Trak system.

Brakes

Hydraulically actuated inboard wet disc brakes.
Emergency brake with transmission declutch feature.

Tires

Standard	370/75-28
Optional	Foam-Filled or Solid

Cab

Certified ROPS/FOPS structure.	Rear view mirrors.
Adjustable suspension seat with retractable seat belt.	Lockable covers.

Steering 4-Wheel

Power steering.
Operator selectable 4-wheel circle, 4-wheel crab, 2-wheel front.

Instruments

Instrument cluster with gauges and warning lights.



Hydraulic System-Implement

Capacity	60 gal	225 L
----------	--------	-------

Piston pump.

Variable flow, load sensitive hydraulic system.

Load holding valves on frame level, stabilizer, attachment tilt, extend and lift cylinders.

Auxiliary hydraulics used for all attachments equipped with cylinders or other hydraulic components. Consists of valves, controls and hydraulic lines.

Accessories & Options

- Enclosed Cab
- Work Lights
- Road Lights
- Rotating Beacon
- Fenders

Attachments

Standard Carriage	50 in. 60 in. 72 in.	1.3 m 1.5 m 1.8 m
Side-Tilt Carriage	50 in. 60 in. 72 in.	1.3 m 1.5 m 1.8 m
Swing 90° Carriage	72 in.	1.8 m
Dual Fork Positioning Carriage		
Tower	8 ft (2.4 m); 50 in. (1.3 m) Standard Carriage	
Pallet Forks	2.36 in. x 4 in. x 48 in. 2.36 in. x 5 in. x 48 in. 2.00 in. x 6 in. x 72 in.	60 mm x 102 mm x 1.2 m 60 mm x 127 mm x 1.2 m 51 mm x 152 mm x 1.8 m
Lumber Forks	1.75 in. x 7 in. x 60 in. 2.36 in. x 6 in. x 60 in.	44 mm x 178 mm x 1.5 m 60 mm x 152 mm x 1.5 m
Cubing Forks	2 in. x 2 in. x 48 in.	51 mm x 51 mm x 1.2 m
Fork Extensions	90 in.	2.3 m
Material Bucket	72 in., 1.0 cu yd 96 in., 1.5 cu yd 102 in., 2.0 cu yd	1.8 m, 0.76 m³ 2.4 m, 1.15 m³ 2.6 m, 1.53 m³
Grapple Bucket	96 in., 1.75 cu yd	2.4 m, 1.34 m³
Truss Boom	12 ft, 2,000 lb 15 ft, 2,000 lb 12 ft with winch, 2,000 lb	3.7 m, 907 kg 4.6 m, 907 kg 3.7 m, 907 kg
Fork Mounted Work Platform	8 ft, 1,000 lb Capacity	2.4 m, 455 kg Capacity
Lifting Hook		

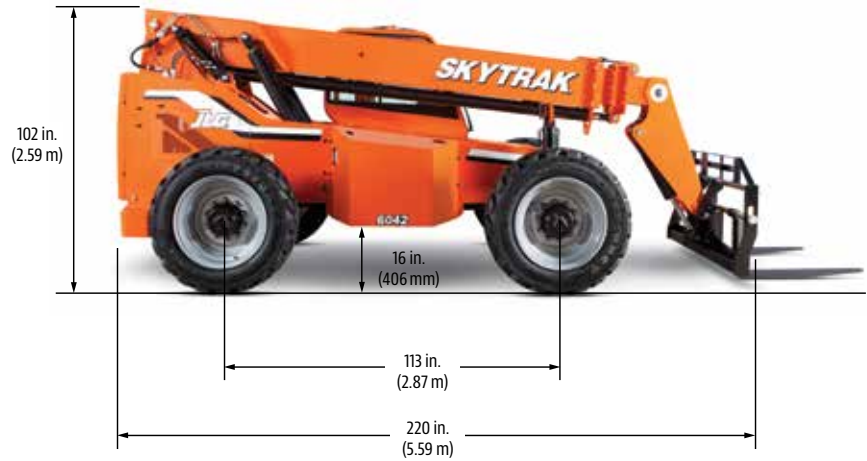
6042

TELEHANDLER

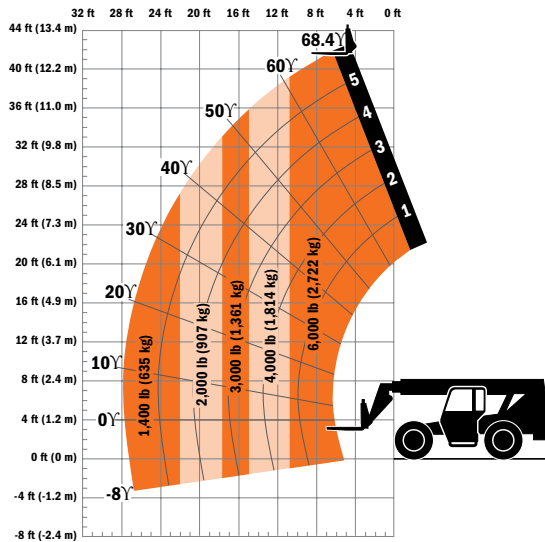
SKYTRAK

Dimensions

All dimensions are approximate.



Load Chart



The JLG "1 & 5" Warranty

JLG Industries, Inc. backs its products with its exclusive "1 & 5" Warranty. We provide coverage on all products for one (1) full year, and cover all specified major structural components for five (5) years. Due to continuous product improvements, we reserve the right to make specification and/or equipment changes without prior notification. This machine meets or exceeds applicable OSHA Regulations in 29 CFR 1910.67, 29 CFR 1926.453, ANSI A92.5-2006, and CSA Standard CAN3-B354.2-M82, as originally manufactured for intended applications.

Part No.: 3132402
R041406
Printed in USA

JLG Industries, Inc.
1 JLG Drive
McConnellsburg, PA 17233-9533
Telephone 717-485-5161
Toll-free in US 877-JLG-LIFT
Fax 717-485-6417
www.jlg.com

An Oshkosh Corporation Company